



0922



0222



0262



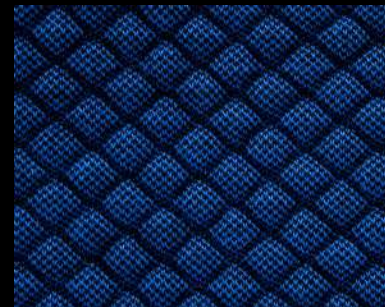
0182



0722



0642



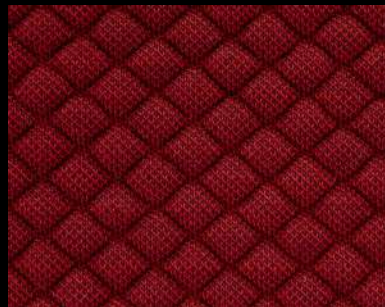
0772



0692



0532



0662



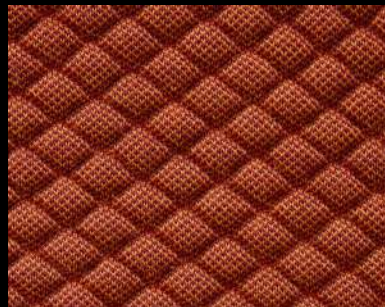
0682



0672



0422



0472



0972

Mosaic 2

cat. Maxi

46% polyester filling - 27% new wool - 12% polyester -
9% nylon - 6% elastane
Flame retardant - 100.000 Martindale

Mosaic 2

eco-sustainable

Technical details

Composition	46% polyester filling - 27% new wool - 12% polyester - 9% nylon - 6% elastane
Weight	Gr./m² 1080
Abrasion test	Martindale - ISO 12947-2: 100.000 rubs
Lightfastness	ISO 105-B02: 6/7
Pilling	ISO 12945-2: 4/5
Fastness to rubbing	ISO 105-X12: 4/5
Flame retardant	BS 5852 Part 1 DIN 4102 B2 EN 1021-1/2 IMO FTP Code 2010:Part 8 US Cal. Bull. 117-2013
Features	STRETCH MATERIAL
Environment	GREENGUARD CERTIFICATION GREENGUARD GOLD CERTIFICATION HPD EPD